

## SPECIFICATIONS

| Dimension                              | Metric             | British              |
|--|--------------------|----------------------|
| Max. Working Height                    | 41.54m             | 136ft 3in            |
| Max. Platform Height                   | 39.54m             | 129ft 9in            |
| Max. Operating Range                   | 24.10m             | 79ft 1in             |
| Max. Platform Range                    | 23.50m             | 77ft 1in             |
| Flatbed Transport Dimensions (L×W×H)   | 11.17m×2.44m×2.83m | 36ft 8in×8ft×9ft 3in |
| Standard Container Transport           | All Applicable     | All Applicable       |
| Overall Width(Axle Expanded)           | 4.17m              | 13ft 8in             |
| Overall Width(Axle Retracted) <b>A</b> | 2.44m              | 8ft                  |
| Platform Size(Length×Width)            | 2.44m×0.91m        | 8ft×3ft              |
| Turntable Tailswing(Axle Expanded)     | 1.39m              | 4ft 7in              |
| Turntable Tailswing(Axle Retracted)    | 2.28m              | 7ft 6in              |
| Ground Clearance                       | 0.40m              | 1ft 4in              |
| Wheelbase(Axle Expanded)               | 4.07m              | 13ft 4in             |
| Wheelbase(Axle Retracted) <b>B</b>     | 4.27m              | 14ft                 |

### Performance

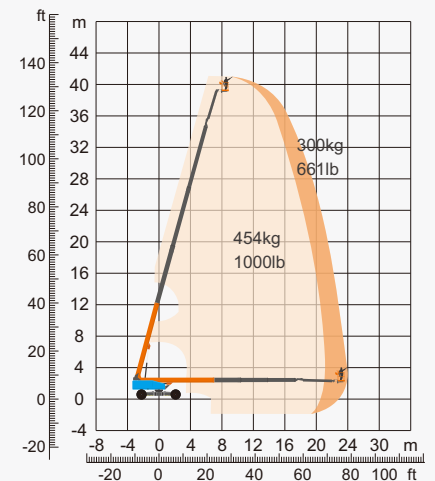
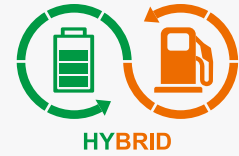
|                                |                |                   |
|--------------------------------|----------------|-------------------|
| S.W.L(Unrestricted/Restricted) | 300kg/454kg    | 661lb/1000lb      |
| Max. Occupants                 | 3              | 3                 |
| Gradeability                   | 45%            | 45%               |
| Travel Speed(Stowed)           | 6.0km/h        | 3.73mph           |
| Travel Speed(Raised)           | 1.1km/h        | 0.68mph           |
| Max. Working Slope             | 5°             | 5°                |
| Turret Rotation                | 360°Continuous | 360°Continuous    |
| Platform Rotation              | 180°           | 180°              |
| Jib Movement                   | 230°           | 230°              |
| Main Boom Maximum Angle        | 75°            | 75°               |
| Turning Radius(Axle Expanded)  | 2.99m/5.41m    | 10ft/17ft 9in     |
| Turning Radius(Axle Retracted) | 8.27m/10.85m   | 27ft 2in/35ft 7in |
| Tyres                          | 445/50-D710    | 445/50-D710       |

### Weight

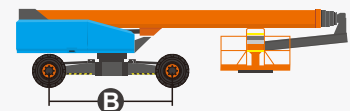
|                |         |         |
|----------------|---------|---------|
| Overall Weight | 21800kg | 48061lb |
|----------------|---------|---------|

### Power

|                        |              |              |
|------------------------|--------------|--------------|
| Lithium Battery        | 173Ah/358.4V | 173Ah/358.4V |
| Emergency Power System | 12V          | 12V          |
| Diesel Tank            | 100L         | 26gal        |
| Hydraulic Tank         | 230L         | 61gal        |



Range Of Motion



## FEATURES

### Standard Items

- Load Sense System
- 12 V DC Auxiliary Power
- Hydraulic Oil Radiator
- Harsh Environment Kits
- Fault Diagnosis System
- Turntable Protection Lock
- High Stiffness Boom System
- Fully-Opened Chassis Cover
- AC Power Cord To Platform
- Descent & Movement Alarms
- 180°Left & Right Swing Platform
- Platform Rotation Angle Monitoring
- Platform Bottoming Out Protection
- Proportional Joystick Controls
- Loose & Broken Chain Monitoring
- Fast & Slow Speed Monitoring
- Working Condition Monitoring
- Engine Start & Stop Protection
- Rexroth Hydrostatic Drive System
- Automatic Steering Angle Matching
- Drive Forced Shunt & Merge Function
- Negative Pressure Brake With Detection
- Real-Time Machine Status Display System
- Cat.3 Safety Architecture - ISO 13849-1
- Operator Anti-Extrusion Protection System
- 4.2m Amplitude Flexible Jib With Angle Detection
- 360°Turntable Continuous Rotation With Inspection
- Expandable Chassis With Proprietary Patented Design
- Horn
- Tilt Alarm
- Hour Meter
- Drive Enable
- Flashing Beacon
- Four-Wheel Drive
- Four-Wheel Steering
- In-Situ Axle Expansion
- Self-Leveling Platform



Telescopic  
Boom-BT



Working  
Height-41m



Jib



Hybrid-H



Rough  
Terrain-RT



Brand New One-Key In-Situ Axle Expansion Technology  
Global Patent Protection



Standard Container Transport

### ZHEJIANG DINGLI MACHINERY CO., LTD.

Address: No.188 Qihang Road,Deqing,Zhejiang P.R.C 313219

Telephone: +86(572)8681688

E-Mail: export@cndingli.com

Https://en.cndingli.com

Due to continuous technology updates, technical parameters are subject to change without notice. This picture book is for reference only, the actual product shall prevail. The copyright is owned by zhejiang dingli, any content may not be copied for any purpose without written permission.

2025-03

